

Interoperability in the time of COVID-19

An HIE Story

Disclosures

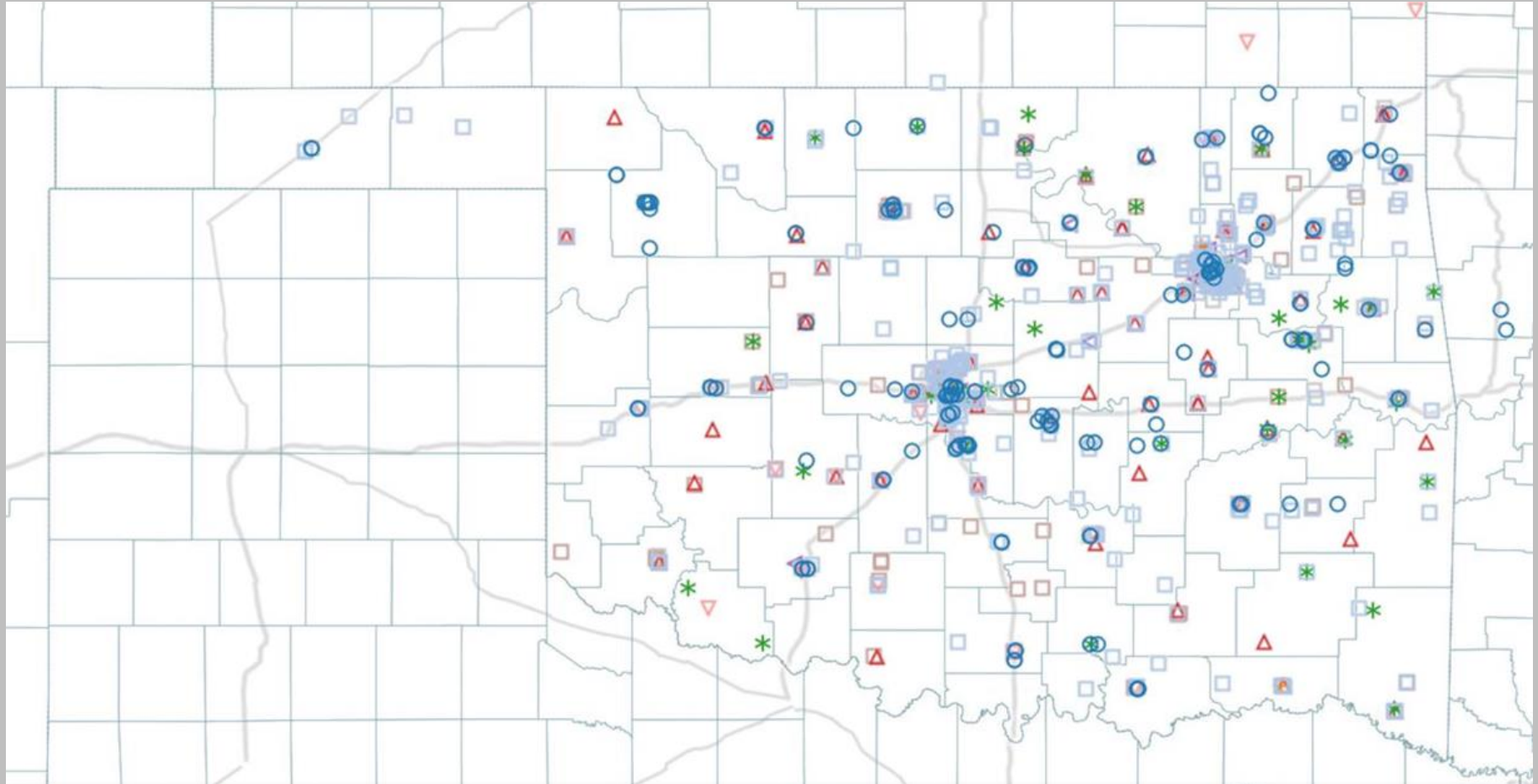
David C. Kendrick, MD, MPH

- CEO, MyHealth Access Network
 - Oklahoma Non-profit Health Information Exchange- does not sell products outside of Oklahoma
- Chair, Department of Informatics, OU School of Community Medicine
- Assistant Provost for Strategic Planning, OU Health Sciences Center
- Chair, Board of NCQA
- Board, Strategic HIE Collaborative
- Board, Patient Centered Data Home
- Consultant, CMS Quality Blueprint Initiative

Current Activities

- Data In
- Data Out
- Additional Services

>1000 locations serving >45,000 patients daily



Facility Type

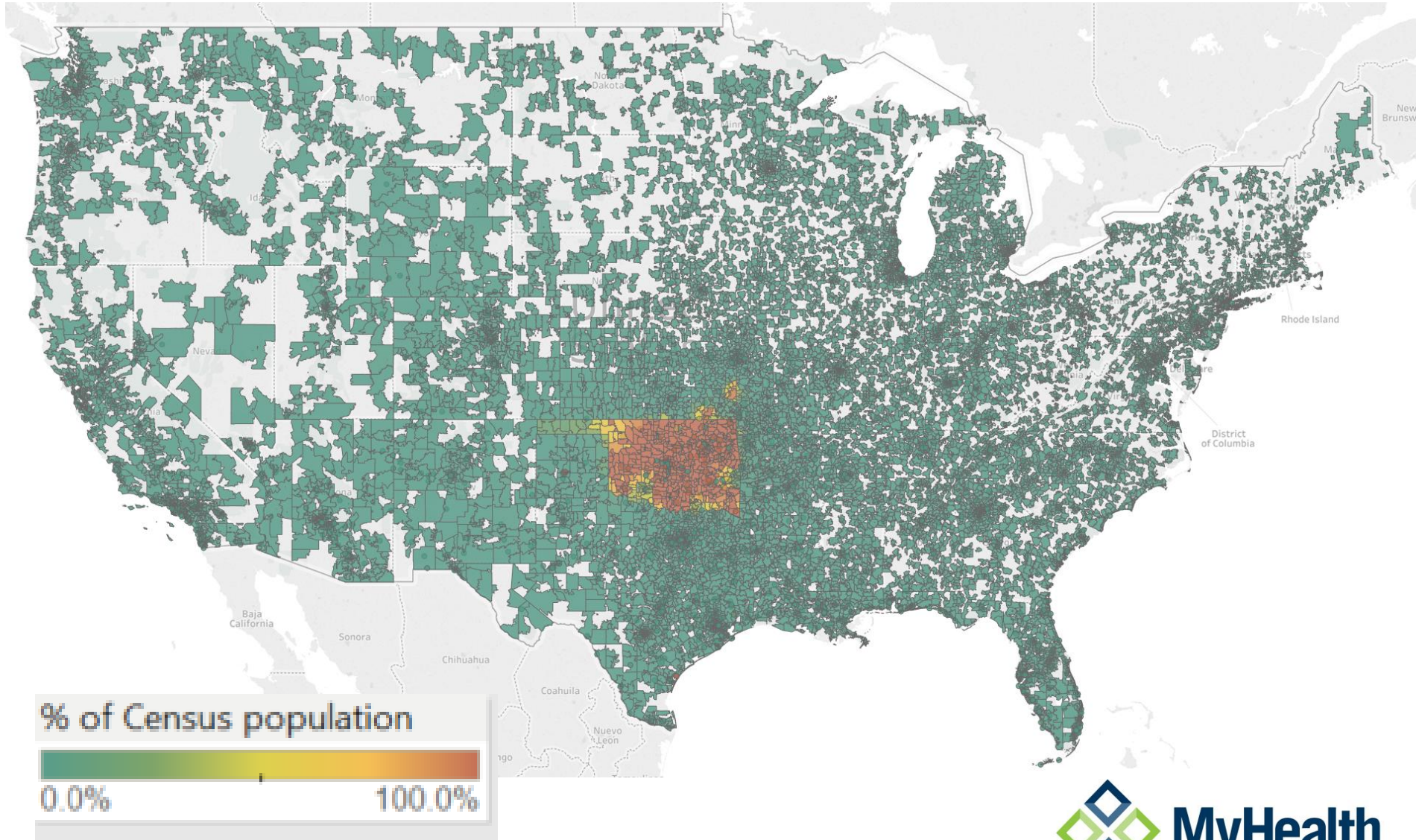
- | | | | |
|----------------------|--------------------|---------------------|----------------------|
| Null | Emergency Services | Lab | Pharmacy |
| Behavioral Health... | FQHC | Long Term Care ... | Public Health |
| Clinic | Hospice | Ophthalmology/Op... | Urgent Care Facility |
| Community/Social... | Hospital | Payer | |

Facility Type

- | | | | |
|----------------------|--------------------|-----|----------|
| Null | Emergency Services | Lab | Pharmacy |
| Behavioral Health... | FQHC | | |
| Clinic | Hospice | | |
| Community/Social... | Hospital | | |



MyHealth Patient Population



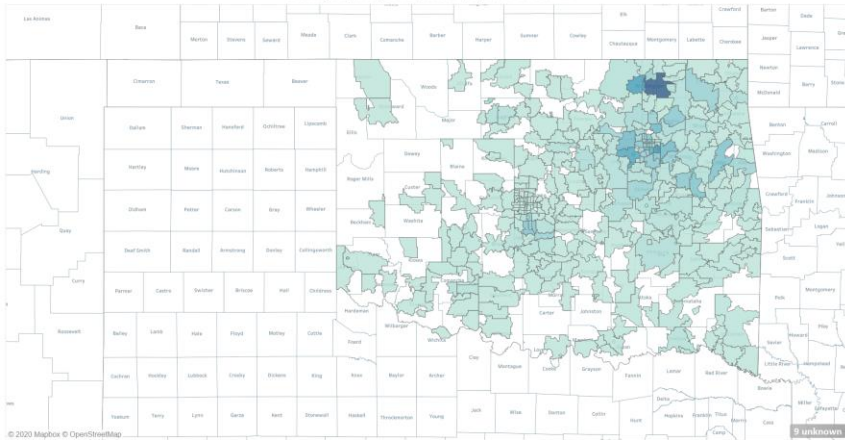
Current Activities: Data In

- Data In
 - Validate all feeds, identify new/novel COVID-19 tests, Ab testing, etc.
 - Expand feeds to new sources
 - Health Department mobile testing
 - Reference labs
 - WalMart, entrepreneurs, etc.
- Data Out
- Additional Services

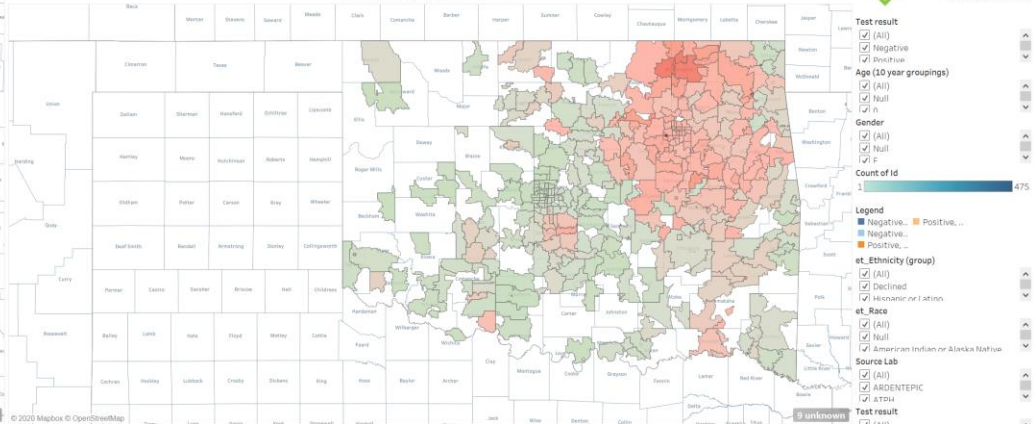
Current Activities: Data Out

- Data In
- Data Out
 - Portal User Accounts to All First Responders, Long Term Care, etc.: Only source of Universal Access
 - COVID-19 Result Alerting Report
 - Public Health COVID-19 Reporting
 - Disease Course Monitoring
- Additional Services

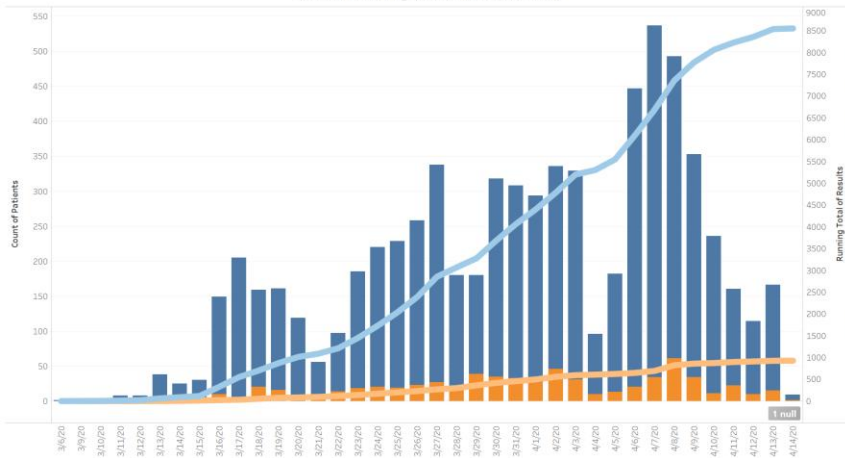
COVID-19 Testing in Oklahoma Showing All Results from All Lab(s)
Shown by Zip Code, Last Update: 4/14/2020 2:59:25 PM



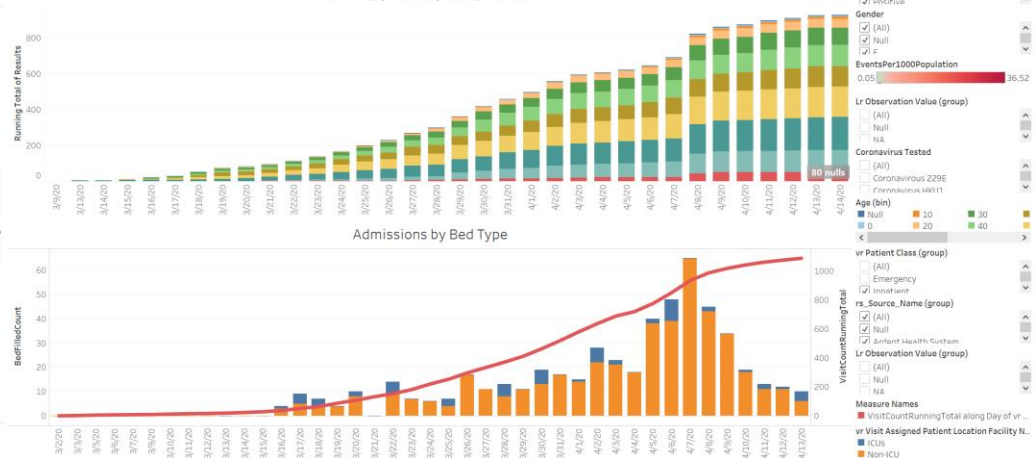
COVID-19 Testing in Oklahoma Showing All Results from All Lab(s)
Shown by Zip Code, Colored by Events per 1000 population
Last Update: 4/14/2020 2:59:25 PM



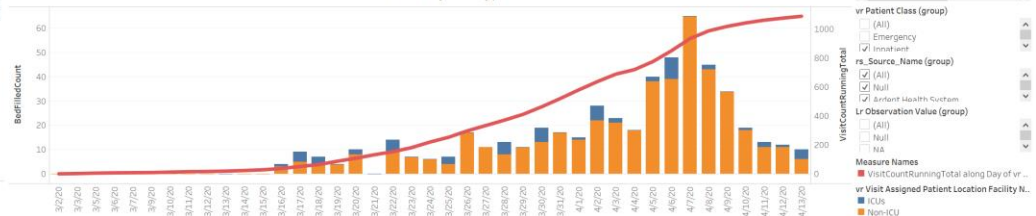
Growth in Testing for COVID-19 over time



Testing (Positive) By Age Group



Admissions by Bed Type



Dashboard, updated hourly

Current Activities: Additional Services

- Data In
- Data Out
- Additional Services: Mobile Devices
 - Daily Symptom Screener to triage patients into 3 categories
 - Reassurance, shelter in place (current rule)
 - May have it, low risk, quarantine
 - May have it, severe symptoms or high risk– connect to care
 - Social Needs Screening
 - Screen all patients with in-person, telemedicine, or other interactions
 - Provide connection to tailored list of community resources
 - Connect Medicare & Medicaid to human navigators

Accountable Health Communities: Statewide Screening for Social Needs

Accountable Health Communities
Demo of Accountable Health Communities HRSN Screening Tool

Language

1. Which of the following languages would you feel comfortable completing a survey in?

- English
- Spanish

Click the link below if you would like to view the Privacy Act Notice for the Accountable Health Communities Model:
<https://myhealthaccess.info/privacy-act-notice-ahc>

OK

5. What is your living situation today?

- I have a steady place to live
- I have a place to live today, but I am worried about losing it in the future
- I do not have a steady place to live (I am temporarily staying with others, in a hotel, in a shelter, living outside on the street, on a beach, in a car, abandoned building, bus or train station, or in a park)

7. Within the past 12 months, you worried that your food would run out before you got money to buy more.

- Often true
- Sometimes true
- Never true

9. In the past 12 months, has lack of reliable transportation kept you from medical appointments, meetings, work or from getting to things needed for daily living?

- Yes
- No

10. In the past 12 months has the electric, gas, oil, or water company threatened to shut off services in your home?

- Yes
- No
- Already shut off

11. How often does anyone, including family and friends, physically hurt you?

- Never
- Rarely
- Sometimes
- Fairly often
- Frequently

Needs

- Data In: Need ONC/CMS/OCR help here
 - State Health Dept lab does not send results to HIE
 - Reference labs only send partial results to HIE
 - One-off testing sites create fragmentation
 - Ensure Ab-testing also available
- Data Out:
 - Results and capabilities of HIE underutilized
 - By state & Federal stakeholders
 - National Registry of COVID-19 could be derived from HIE's
 - Provider self-monitoring based on potential/real exposures
 - Interoperability with VA, DOD, IHS needed
- Additional Services
 - Emergency Alerting/Response Channel could be used to reach population
- Long Term:
 - HIE as critical national infrastructure, source of funding needed
 - Roles in Public Health, Disaster Response, Clinical Care, Value Based Payment Models