



The STAR HIE Program Monthly Meeting

Thursday November 19, 2020, 2:00 PM – 3:00 PM, EST

The Office of the National Coordinator for
Health Information Technology



The STAR HIE Program-Monthly Meeting Agenda

- STAR HIE Program updates- 5 min
- EMI Advisors updates- 5 min
- Georgia Health Information Network (GaHIN)- 25-30 min
 - Presenters:
 - Denise Hines, DHA, PMP, FHIMSS
 - Tracy M. Field MS, JD
- Questions-15-20 min

The STAR HIE Program – Updates

STAR HIE Program – Updates

- Upcoming dates
 - Program Monitoring Plan is due on January 6, 2021
 - MOU, MOA, Notary Agreements are due April 1, 2021
 - Upcoming Monthly Meeting Series
 - HealthShare Exchange of Southeastern Pennsylvania, Inc. (HSX) - December 17, 2020
 - Health Current Arizona - January 21, 2021
 - Texas Health Services Authority (THSA) - February 18, 2021
 - Kansas Health Information Network KHIN d/b/a KONZA - March 18, 2021
 - SPIRE Communications
 - Confluence
 - Emergency Preparedness Information Workgroup

EMI Advisors – Updates

Needs Assessment Themes

- Clarity needed on the difference between COVID-19 federal reporting requirements and state public health reporting requirements and public health – health IT standards.
- National policy perspective (i.e., Information Blocking and Certification provisions) and implications for the STAR HIE Program.

Email kristina.celentano@emiadvisors.net and your ONC Project Officer with additional suggestions.

Review of Technical Assistance Request and Approval Process

Georgia Health Information Network (GaHIN)



STAR HIE Program Monthly Meeting

Developing Strong HIE and State, County, Local, Public Health Department Relationships: The GaHIN Experience

Denise Hines, DHA, PMP, FHIMSS, Executive Director,
Georgia Health Information Network (GaHIN)

Tracy M. Field, MS, JD
Partner Parker Hudson

The Office of the National Coordinator for
Health Information Technology



Overview of GaHIN

Georgia Health Information Network (GaHIN)

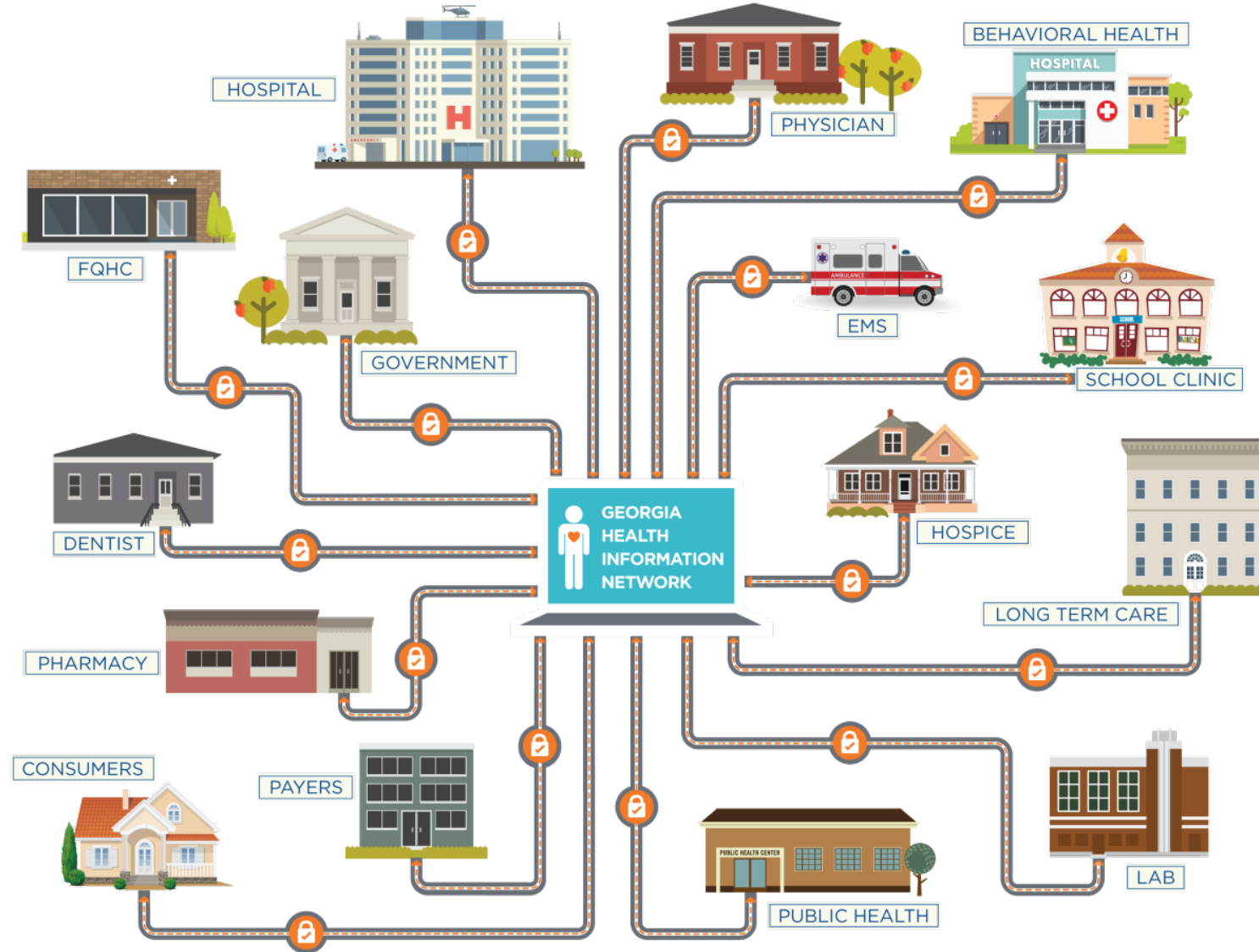
- Dedicated to creating a healthier Georgia through the use and exchange of electronic health information
 - Advance patient-centered healthcare
 - Increase efficiency
 - Improve the health of the state's entire population



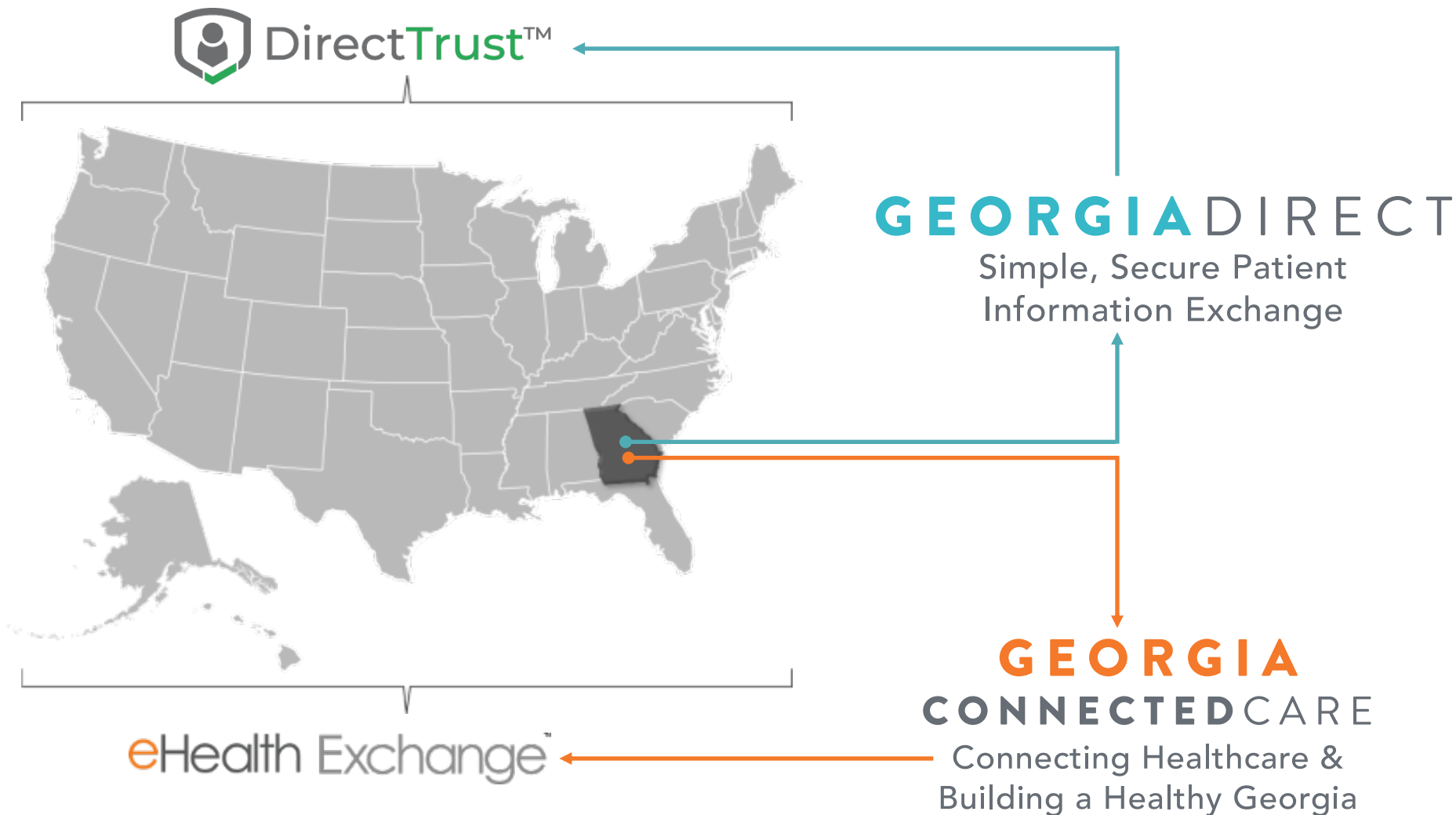
The Inception of GaHIN

- Conceived almost 20 years ago to facilitate the exchange of patient health data across healthcare settings.
- Organized by the Department of Community Health (DCH) and the Georgia Health Information Technology Regional Extension Center (GA-HITEC).
- A non-profit organization, “The Network of Networks” facilitates exchange across the entire state.
- 90/10 funding administered through DCH for GaHIN.
- GaHIN named state-designated HIE in 2016.

Creating a Statewide Electronic Network



GaHIN Products and Services



GEORGIA DIRECT

Basic Data Exchange

Email messaging service to securely send patient health information to other authorized healthcare professionals – available at no cost.

2020 Totals: 1/1/2020 - 9/30/20

- 646,828 send & receive transactions
 - 2019 – 1,108,303 Direct transactions
- 6,448 registered providers
- 360 member organizations
- Total GeorgiaDirect addresses: 5,667



Connecting Georgia

GEORGIA
CONNECTEDCARE

Robust Integrated Patient Search (Query)

Providers can use their EHR to quickly access patient health data from hospitals, physician practices, state health systems and much more.

2020 Totals: 1/1/2020 - 9/30/20

- ~14,999 connected providers
- 3,118,890 query & retrieve
 - 2019 – 3,885,730 query & retrieve
- ~43M MPI records

eHealth Exchange™



Three Ways to Connect

GEORGIA CONNECTEDCARE

Provider organizations that want to participate in Georgia ConnectedCare and be able to query for patient data from within their EHR have three ways to connect through GaHIN:



Clinical Viewer

GEORGIA CONNECTEDCARE

- Census Search
- Patient Profile
 - Dashboard
 - Summary
 - Reports
 - CCD
 - GRITS
 - 3231 Immunization Form
 - Labs

***Demoski_changed, Helen** Age / Gender 65 Female
DOB 4/21/1950
MRN N/A

Dashboard Summary Reports Labs Lab Reports

Date Range Aug 17, 2011 to Nov 17, 2015 Update Organize

Problems

Name	Type	Date
Valvular Heart Disease	Primary Diagnosis	10/09/2011
ASTHMA NOS	Primary Diagnosis	07/04/2011
ASTHMA NOS	Primary Diagnosis	12/11/2010
ASTHMA NOS	Primary Diagnosis	09/27/2010
TRACHEA/BRONCHUS DIS NEC	Primary Diagnosis	07/27/2010
TRACHEA/BRONCHUS DIS NEC	Primary Diagnosis	07/27/2010

Lab Results

Date	Type	Value	Acuity	Trend
11/05/2013 23:...	WBC	16.6	H	
11/05/2013 23:...	HGB	10.2	L	
11/05/2013 23:...	HCT	28.6	L	
11/05/2013 23:...	BUN	26	H	20-26

Encounters

Type	Date	Primary Diagnosis	Provider
	03/27/2015		
	11/03/2013		Bob Johnson
	11/02/2013	Valvular Heart Disease	Bob Johnson
	01/08/2011	ASTHMA NOS	
	12/11/2010	ASTHMA NOS	Sheila White
	09/27/2010	ASTHMA NOS	Sheila White

Providers

Date Last S...	Name	Specialty	Npi	Relationship	Phone	Fax
	Ken Green			Attending Physi...		
	Ken Green			Attending Physi...		
	Ken Green			Attending Physi...		
	Sheila White			Attending Physi...		

Immunizations

Dose Date	Medication Name	Dose
No immunizations found		

Medications

Start Date	Stop Date	Medication	Indication	Order Date
No medications found				

Reports

Date	Note Type	Summary	Provider
No reports found			

Patient Profile: Dashboard

Connected Organizations

GEORGIA CONNECTEDCARE



5

State
Agencies



6

Health
Systems



4

Regional
HIEs



4

CMOs



5

States + VA
+ DOD



2

Specialty
Connections

Connected Organizations

State Agencies

- GA Medicaid/Department of Community Health (DCH)
- GA Department of Public Health (DPH)
- GA Division of Family and Children Services (DFCS)
- GA Department of Juvenile Justice (DJJ)
- GA Department of Behavioral Health and Developmental Disabilities (DBHDD)

Health Systems

- Children's Healthcare of Atlanta
- Emory Healthcare
- Grady Health System
- Gwinnett Health System
- Harbin Clinic
- WellStar

Regional HIEs

- GRACHIE/Chatham HealthLink
- HealthConnection
- HealthIE Georgia
- HI-BRIDGE HIE

Care Management Organizations

- Amerigroup (with IHE)
- CareSource
- Peach State
- WellCare

Specialty Connections

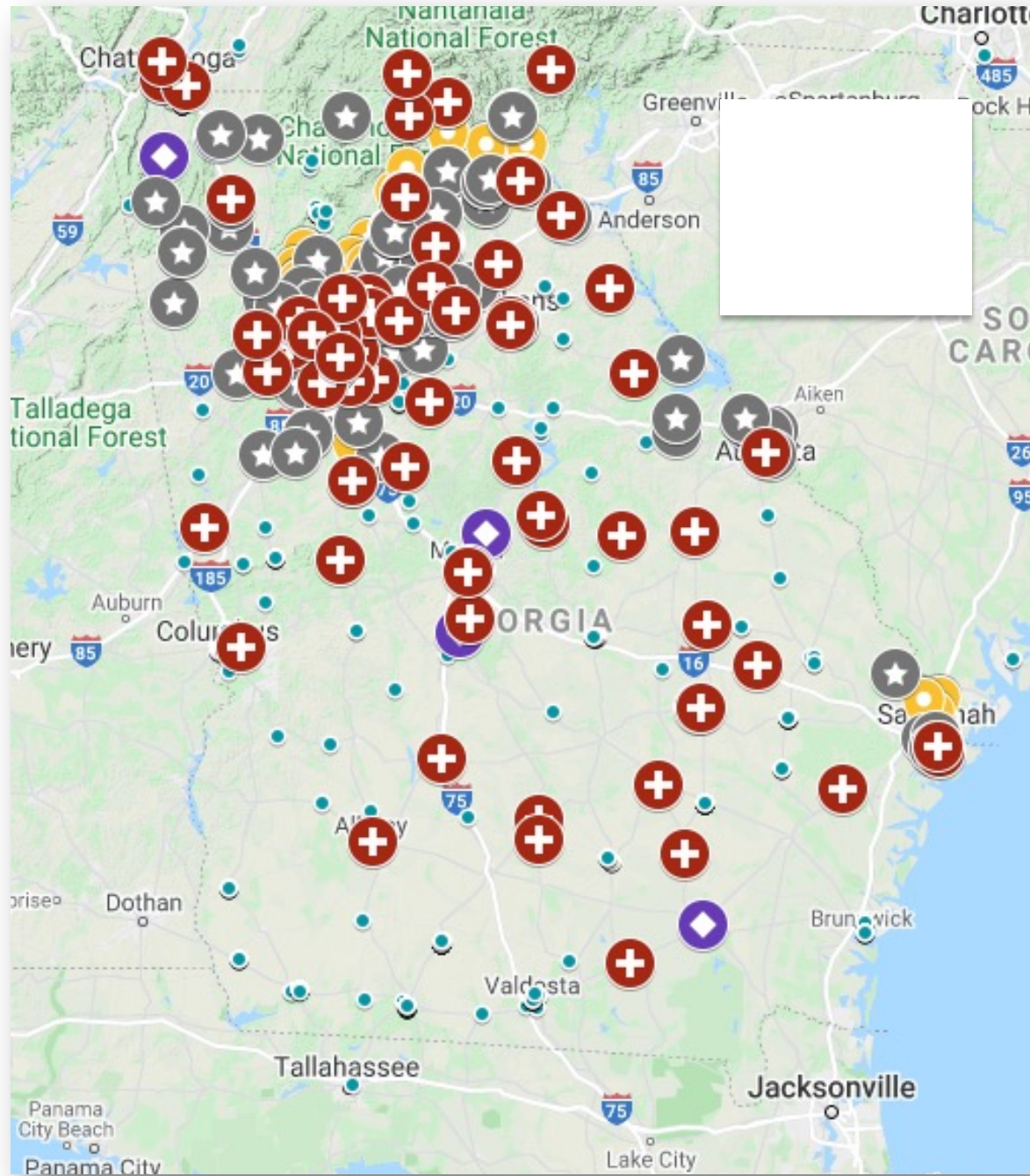
- Atlanta Gastroenterology Associates
- Georgia Partnership for Telehealth

National Exchange

eHealth Exchange™

- Veterans Health Administration
- Department of Defense
- My Medical Neighborhood Coalition on Health
- DaVita Healthcare Partners
- Alabama (AOHR)
- East Tennessee HIE (etHIN)
- Kansas HIE (KONZA)
- North Carolina HIE (NCHIEA)
- South Carolina HIE (SCHIEEx)

GEORGIA CONNECTEDCARE



Supporting Public Health in Georgia

Connecting Georgia's Agencies

Department of Public Health

- Lead agency for:
- Preventing disease, injury and disability;
- Promoting health and well-being;
- Preparing for and responding to disasters from a health perspective



Department of Behavioral Health and Developmental Disabilities

- Serves people living with mental health challenges, substance use disorders, and intellectual and developmental disabilities;
- Operates state hospitals and provides community-based services

Department of Juvenile Justice

- Serves youthful offenders up to the age of 21
- Rehabilitative treatment services and supervision

Department of Community Health

- One of Georgia's four health agencies serving the state's growing population of 10+ million people;
- Lead agency for Medicaid;
- Oversees the State Health Benefit Plan and Healthcare Facility Regulation Division (HFRD)

Division of Family and Children Services

- Administers foster care and recruits foster homes
- Investigates reports of child abuse
- Issues SNAP, Medicaid, TANF and childcare assistance
- Assistance for out-of-work parents

How We Did It

- Built and nurtured long-term relationships
 - Many of these state agencies are represented on GaHIN's Board
 - Regular meetings – weekly, monthly
 - Training for their staff and vendors
- Proactive monitoring of activities and outreach/correction as needed
- Emphasis on how we can meet their needs and support their goals



Examples: Supporting Georgia's Most Needy

- Georgia Families® is a program delivering healthcare services to members of Medicaid and PeachCare for Kids®.
- Partnership between DCH and four private care management organizations (CMOs).
- These CMOs are connected to GaHIN to facilitate care coordination.
- These patients and their physicians are early adopters of GaHIN's enhanced ADT Alerts.

Example: Georgia Health Registries



- ✓ Immunization – Georgia Registry of Immunization Transactions and Services (GRITS)
- ✓ eLabs Submission (via SendSS Gateway ~ State Electronic Notifiable Disease Surveillance System)
- ✓ Georgia Comprehensive Cancer Registry
- ✓ Alzheimer's Registry
- ✓ Birth Defects Registry
- Newborn & Newborn Screening Registry
- EMS/Trauma Database
- Prescription Drug Monitoring Program
- Public Health District Offices/Labs Connectivity
- Stroke Registry – Awareness Campaign (Providers & Patients)

Georgia Comprehensive Cancer Registry (GCCR)

- GCCR is a statewide population-based cancer registry collecting all cancer cases diagnosed among Georgia residents since January 1, 1995.
- In 2017, Georgia Center for Cancer Statistics added **GeorgiaDirect** as part of their protocol for providers and small hospitals that do not send information electronically.

Cancer Registry Success Story

Before

Georgia Cancer Registry received monthly pathology reports from 50-60 hospitals, surgery centers, and provider offices via fax and FedEx delivery

After



Converted the process from 100% paper transmission to 95% electronic transmission



Reduction of three Information Analyst FTEs to one FTE to support record reconciliation



Staff has more time to analyze data to further the understanding of cancer and develop strategies/policies for prevention, control and treatment

How GaHIN Is Supporting Public Health Amid COVID-19

ONC Grant – Proposed Activities

Increase electronic reporting of results to the COVID-19 Registry from target populations:

1. Connect clinical facilities of the Veterans Administration across Georgia
2. Connect state correctional facilities
3. Connect hospitals that are not currently sending COVID-19 test results through GaHIN

Enhance data value by combining electronic lab results with demographic and other clinical data from across GaHIN's broad network:

1. Flag patient records based upon an established criterion, such as a test result
2. Query the GaHIN network for data fields most useful to epidemiologic modeling
3. Create visualization tool for aggregated data from target populations:
 - Year 1 target population: veterans
 - Year 2 target population: minorities

Governor's Office (OPB) working with the Department of Community Health (DCH) requested that GaHIN provide certain information as part of the State's COVID-19 response and re-opening planning.

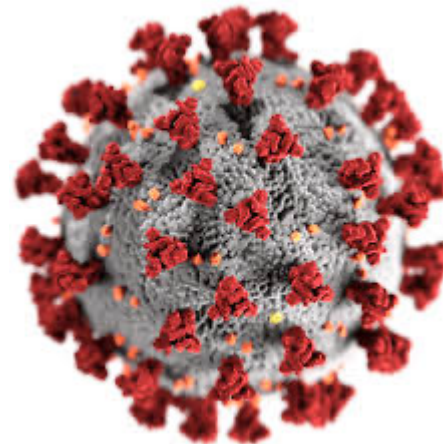
GaHIN developed interagency agreements with DCH and DPH.

The data elements requested include:

- Admits, Discharges, Transfers (ADT)
- Death Reporting
- Electronic Lab Reports (ELR)
- Emergency Management (EMS)

Obtaining COVID-19 Information

- GaHIN parses data to pull in COVID-19 cases.
- Submits information to state and to researchers.
- Useful for epidemiologists, who can access de-identified patient data within GaHIN to look at co-morbidities.
- Potential to use information for contact tracing in future.



Notification of Enforcement Discretion Under HIPAA



- DEPARTMENT OF HEALTH AND HUMAN SERVICES 45 CFR Parts 160 and 164 Notification of Enforcement Discretion under HIPAA to Allow Uses and Disclosures of Protected Health Information by Business Associates for Public Health and Health.
- Department of Community Health & Department of Public Health-Record data sharing under their authority for surveillance activities (O.C.G.A. § 31-12-2).
- INTERGOVERNMENTAL AGREEMENT #2020023 BETWEEN GEORGIA DEPARTMENT OF PUBLIC HEALTH AND GEORGIA DEPARTMENT OF COMMUNITY HEALTH effective May 13th, 2020.
- GaHIN Letter from State Epidemiologist and Chief Science Officer.



The Office of the National Coordinator for
Health Information Technology

QUESTIONS??

www.gahin.org
dhines@gahin.org



Phone: 202-690-7151



Health IT Feedback Form:

<https://www.healthit.gov/form/healthit-feedback-form>



Twitter: @onc_healthIT



LinkedIn: Search “Office of the National Coordinator for Health Information Technology”



**Subscribe to our weekly eblast
at healthit.gov for the latest updates!**